



EDUCATION

U16s

OPTIONS

WHAT EDUCATION OPTIONS ARE THERE???

- **6th Form with School Rugby (local or boarding)**
- **Affiliated ACE College (Myerscough)**
- **Non-rugby College/schools & apprenticeships**



HOW DO YOU FIND THE BEST FIT FOR YOU??

School/College/Apprenticeship of your choice

Does it fit socially: travel time, cost, culture??

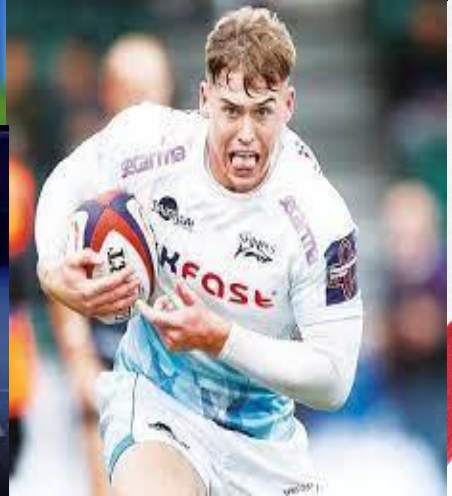
Is it a suitable learning environment that meets your needs??

Does it cater for my Rugby Development??



To do list:

- Gather information from as many different sources as possible
- Discussion needs to be between you and your parent/son.
- Pros/Cons list between options.
- Needs to be the right option for you/your son



Rugby Considerations

6th Form with School Rugby (local or boarding)	Affiliated ACE College (Myerscough)	Non-rugby College/schools & apprenticeships
<p>Play and train with school</p> <p>Academy training once per week</p> <p>If appropriate and depending on school train/play with club</p> <p>Considerations: How do we strike a balance of training and playing? When do we recover?</p>	<p>Monday and Friday coaching support from Academy @ Myerscough</p> <p>Wednesday fixtures at Myerscough</p> <p>Wednesday academy training</p> <p>Considerations: Transport and early dialogue regards competing training/games with academy stuff</p>	<p>Train with age group at Sharks</p> <p>Outreach for the exceptional</p> <p>Train with extra group on alternate day to age grade group at Sharks</p> <p>Play/train with club colts/senior (U18s) teams</p> <p>Considerations: Where will you play? Is it right for you to play/train senior rugby?</p>



Timeline Information

- **If looking for private school and scholarship opportunities start making contact September/October**
- **Myerscough presentation at training in September/October**
- **October/November Apprenticeships**
- **Mocks (really important both to set you up and learn where to improve/hone exam technique)**
- **Myerscough game/open morning: February 1/2 term**

We are happy to help in anyway
we can.



Revision and Exam

WHO IS IN YOUR SUPPORT NETWORK??

- **Program Lead** – Noel Speed
- **Education** – Andrew Jibson

https://docs.google.com/forms/d/e/1FAIpQLSc_bjygNpzRoHgpaayXV4ZwUljamsP8yx-Ts4b80qARaHiKw/viewform?usp=sf_link

- **Rugby** – Andrew Groves, Marcus Jackson, Hugo Corbett, Fergus Mulchrone
- **Performance (S&C/Nutrition/Psych)** – Max Addey/Kevin Mannion
- **Medical** – Lauren Mullins
- **Analysis** – Mike Ingham
- **Safeguarding** – Carol Baker

What next??

- **Get your ducks in a row!!! Research, Pros and Cons, Conversations**
- **Please complete education questionnaire :**

https://docs.google.com/forms/d/e/1FAIpQLSc_bjygNpzRoHgpaayXV4ZwUljamscP8yx-Ts4b80qARaHiKw/viewform?usp=sf_link

- **Arrange 1:1 meetings with Andrew Jibson if you would like**

Andrew.jibson@salesharks.com

07725971581



Please get in touch if there is anything we can help you with